

Formative Assessment for Multilingual/English Learners Institute

Apr. 11, Apr. 18 & May 9, 2024

3:30 PM-5:30 PM

This is a 3-part online Professional Learning Institute focused on key principles, instructional considerations, and action planning for formative assessment practices centered around Multilingual/English Learners.

3 Dynamic Synchronous Sessions

Participants will have multiple opportunities to engage in learning and application of EL-focused formative assessment processes aligned with the CA ELD Standards.



Online professional learning open to teachers, coaches, and administrators of Multilingual/English learners in preK-12th grade

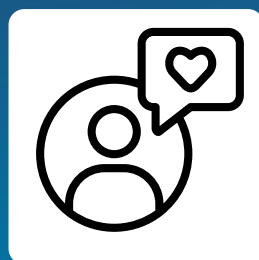
Session 1



Thursday, April 11, 2024

**Formative Assessment:
Processes and "Look-Fors"**

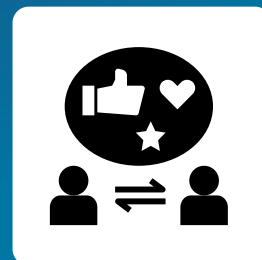
Session 2



Friday, April 19, 2024

**Formative Assessment:
Leveraging Linguistic Assets**

Session 3



Thursday, May 9, 2024

**Formative Assessment:
Putting It All Together!**

Register Now!

Registration Fee: \$565

*Training date is subject to change/cancellation based on registration numbers



**Registration
Deadline:
April 8, 2024**



**Loyola Marymount University
Center for Equity for
English Learners**

ceel@lmu.edu

